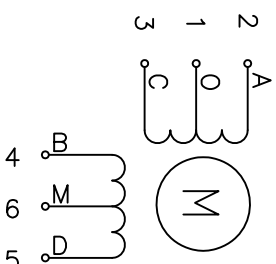


REV	ECN NO.	DESCRIPTION	DRN	APP'D	DATE

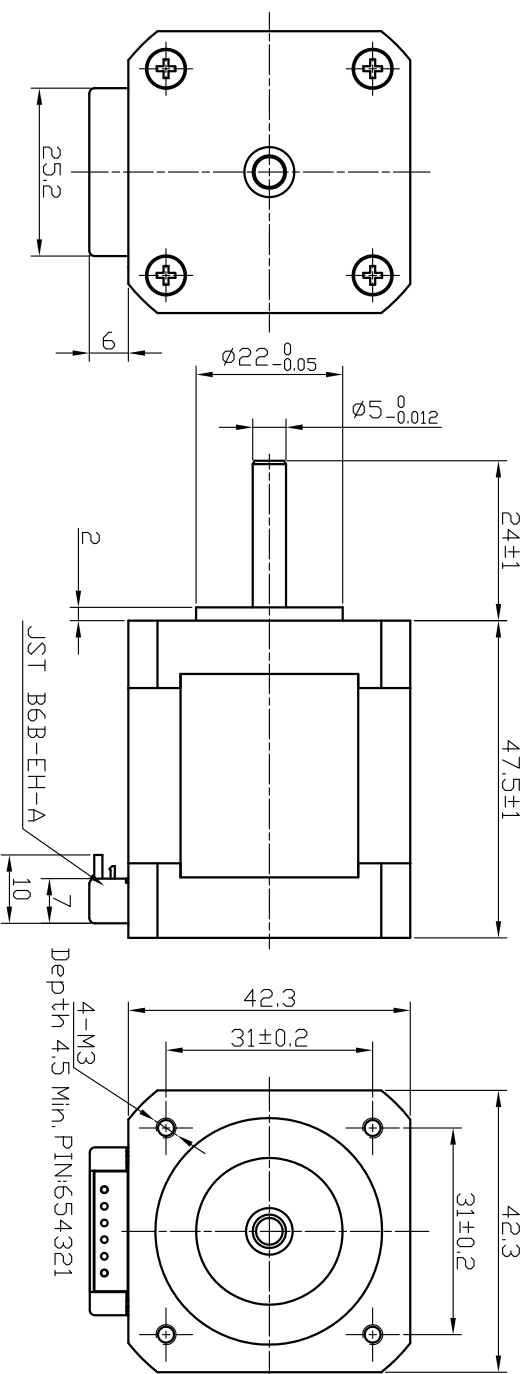
Wiring Diagram (接线图)



Exciting Sequence (励磁顺序)

CW DIRECTION	STEP	A	C	B	D	O	M
↑	1	+	-	-	-	-	+
	2	-	+	+	-	-	+
	3	-	-	-	+	+	+
	4	+	-	-	-	+	+
	1	+	-	-	+	+	+

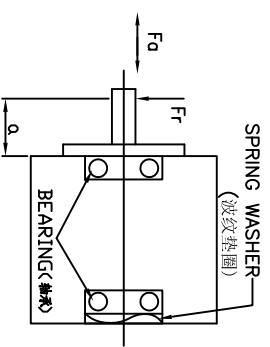
CW, see from flange side
(顺时针, 从法兰侧看)



SPECIFICATION

STEP ANGLE	步距角	1.8°/full step(步距)
STEP ANGLE ACCURACY	步距角精度	±5%
NUMBER OF PHASE	绕组相数	4
RATED VOLTAGE	额定电压	4.0 VDC
RATED CURRENT	额定电流	1.2 A
RESISTANCE/PHASE	每相电阻	3.3±10% ohms@20°C
INDUCTANCE/PHASE	每相电感	2.8±20% mH@1kHz
HOLDING TORQUE	保持转矩	3170 g.cm
PULL OUT TORQUE	运行转矩	
BACK EMF	反电动势	
DETENT TORQUE	定位转矩	
ROTOR INERTIA	转子转动惯量	68 g.cm ²
WEIGHT	重量	350 g
TEMPERATURE RISE	温升	Less than 80K(ΔT80度)
SOURCE VOLTAGE	驱动器电压	24 VDC
INSULATION CLASS	绝缘等级	B 130°C
DIELECTRIC STRENGTH	介电强度	500VAC 1MIN
INSULATION RESISTANCE	绝缘电阻	100MΩhm @500VDC
IP CODE	防护等级	IP30
OPERATION AMBIENT	使用环境	Ambient temperature:-20...+50°C,humidity Max. 85%(No condensation)
STORAGE AMBIENT	存储环境	Ambient temperature:-20...+85°C,humidity Max. 85%(No condensation)

PERMISSIBLE RADIAL+AXIAL FORCE (允许轴端力和轴侧力)



SPRING WASHER
(波纹垫圈)

BEARING(轴承)

AXIAL-FORCE 轴向压力 Fa=10 N Max.

DISTANCE 距离 q=20 mm

RADIAL-FORCE 径向压力 Fr=28 N Max.

SHAFT RADIAL PLAY 径向间隙 0.02mm Max. @4N

SHAFT AXIAL PLAY 轴向间隙 0.08mm Max. @4N

UNLESS OTHERWISE SPECIFIED TOLERANCES: ANGULAR: ±0.5° DECIMALS: ±0.25 ±0.1 UNIT: mm DO NOT SCALE DRAWING

DESIGN	DATE	P/N	TITLE
		3.1.01.042.***	Specifications
CHECK		USED ON	FL42STC47-1206A
		DWG NO.	
FIRST ANGLE PROJECTION		SCALE	NTS
		SHEET	OF
		PULLING MOTOR	