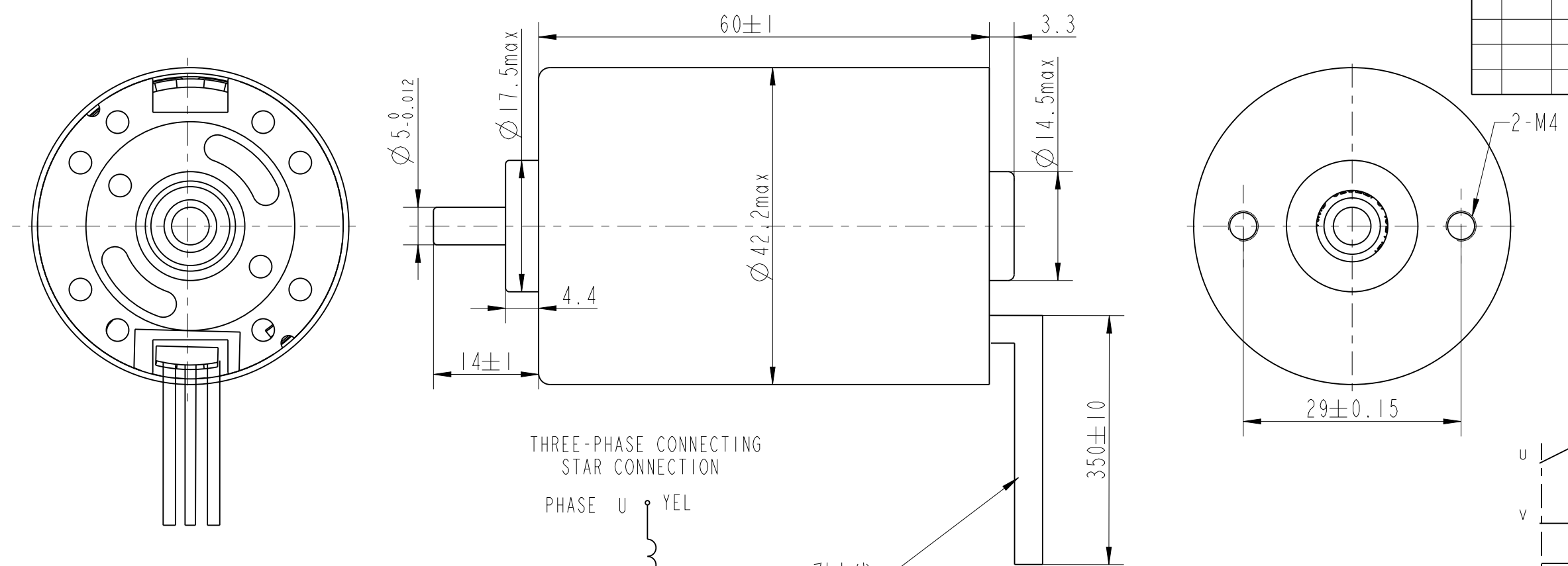
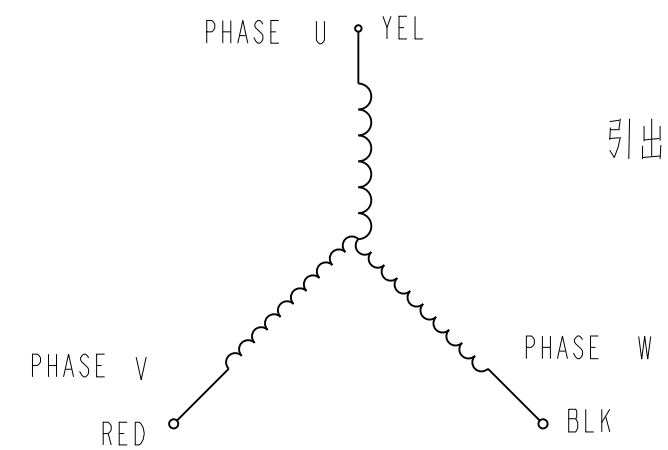


REV	ECN	NO	DESCRIPTION	DRN	APP'D	DATE

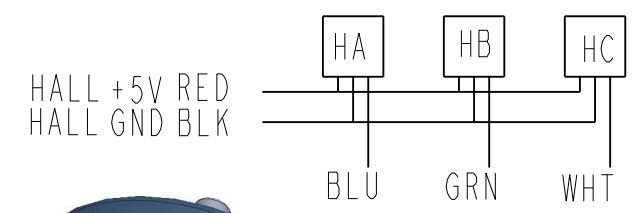


THREE-PHASE CONNECTING
STAR CONNECTION

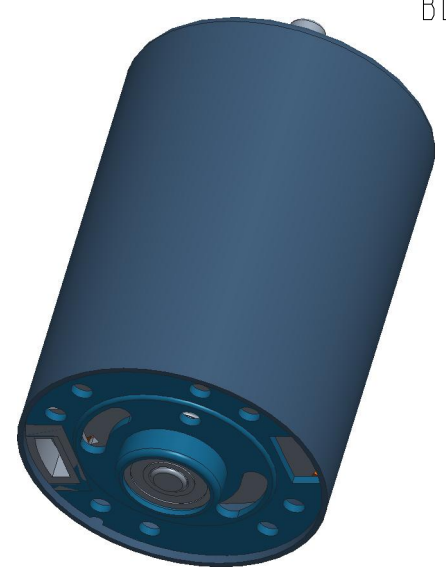
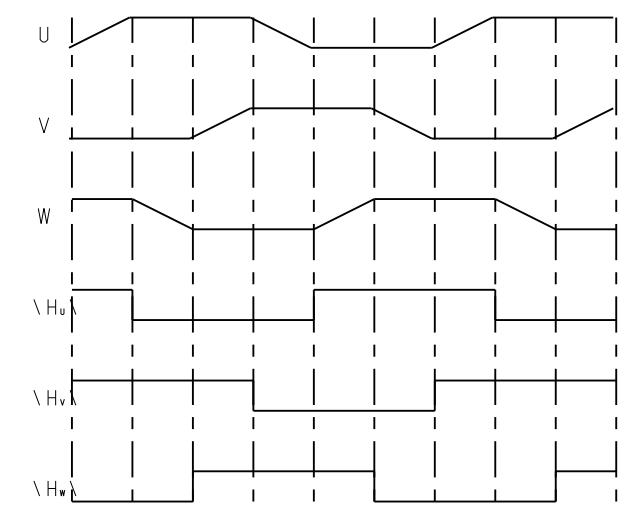


引出线

HALL CONNECTING



CW COMMUTATION
VIEWED FROM OUTPUT SHAFT



1:1

NUMBER OF PHASE	绕组相数	3	Wires for Phases UL1332 AWG22			
NUMBER OF POLES	极数	8	PHASE U	PHASE V	PHASE W	
LINE TO LINE RESISTANCE	线电阻	1.2±10% ohms@20°C	YEL	RED	BLK	
LINE TO LINE INDUCTANCE	线电感	1.6±20% mH@1kHz	Wires for Phases UL1430 AWG26			
NOMINAL VOLTAGE	额定电压	24 VDC	HALL VCC	Hu	Hv	Hw
NO LOAD SPEED	空载转速	4200±10% RPM	RED	BLU	GRN	WHT
NO LOAD CURRENT	空载电流	<0.3 A				HALL Gnd
RATED TORQUE	额定转矩	120 mN.m	PERMISSIBLE RADIAL+AXIAL FORCE 			
RATED SPEED	额定转速	3200±10% RPM				
RATED CURRENT	额定电流	2.1 A				
PEAK TORQUE	峰值扭矩	360mN.m				
PEAK CURRENT	峰值电流	6.3A				
BACK EMF CONSTANT	反电势常数	4.0Vrms/kRPM				
TORQUE CONSTANT	转矩常数	54mN.m/A				
INSULATION CLASS	绝缘等级	B 130°C				
DIELECTRIC STRENG	介电强度	650VAC ISEC				
INSULATION RESIST	绝缘电阻	100MΩhm @500VDC				
ROTOR INERTIA	转子转动惯量	44g.cm ²	AXIAL-FORCE	轴向压力	Fa=10 N Max	
WEIGHT	重量	0.35Kg	DISTANCE	距离	a=10 mm	
OPERATION AMBIENT	使用环境	Ambient temperature:-20...+50°C, humidity Max.85%(No condensation)	RADIAL-FORCE	径向压力	Fr=15 N Max	
STORAGE AMBIENT	存储环境	Ambient temperature:-10...+85°C, humidity Max.85%(No condensation)	SHAFT RADIAL PLAY	径向间隙	0.02mm Max. @4N	
			SHAFT AXIAL PLAY	轴向间隙	0.14mm Max. @4N	

A	REV	ECN NO.	DESCRIPTION	DESIGN	DATE	P/N.	TITLE
						3.1.02.042.1063	Specifications
UNLESS OTHERWISE SPECIFIED			MATERIAL	CONTR.	CHECK	USED ON	FL42CBL60-24V-3240A
TOLERANCES:						DWG NO.	REV A
DECIMALS:							
.X ±0.5							
.XX ±0.25							
.XXX ±0.1							
UNIT: mm			FIRST ANGLE PROJECTION	SCALE 1:2			FULLING MOTOR
DO NOT SCALE DRAWING							SHEET 1 OF 1